



Welcome to West Point Grey!

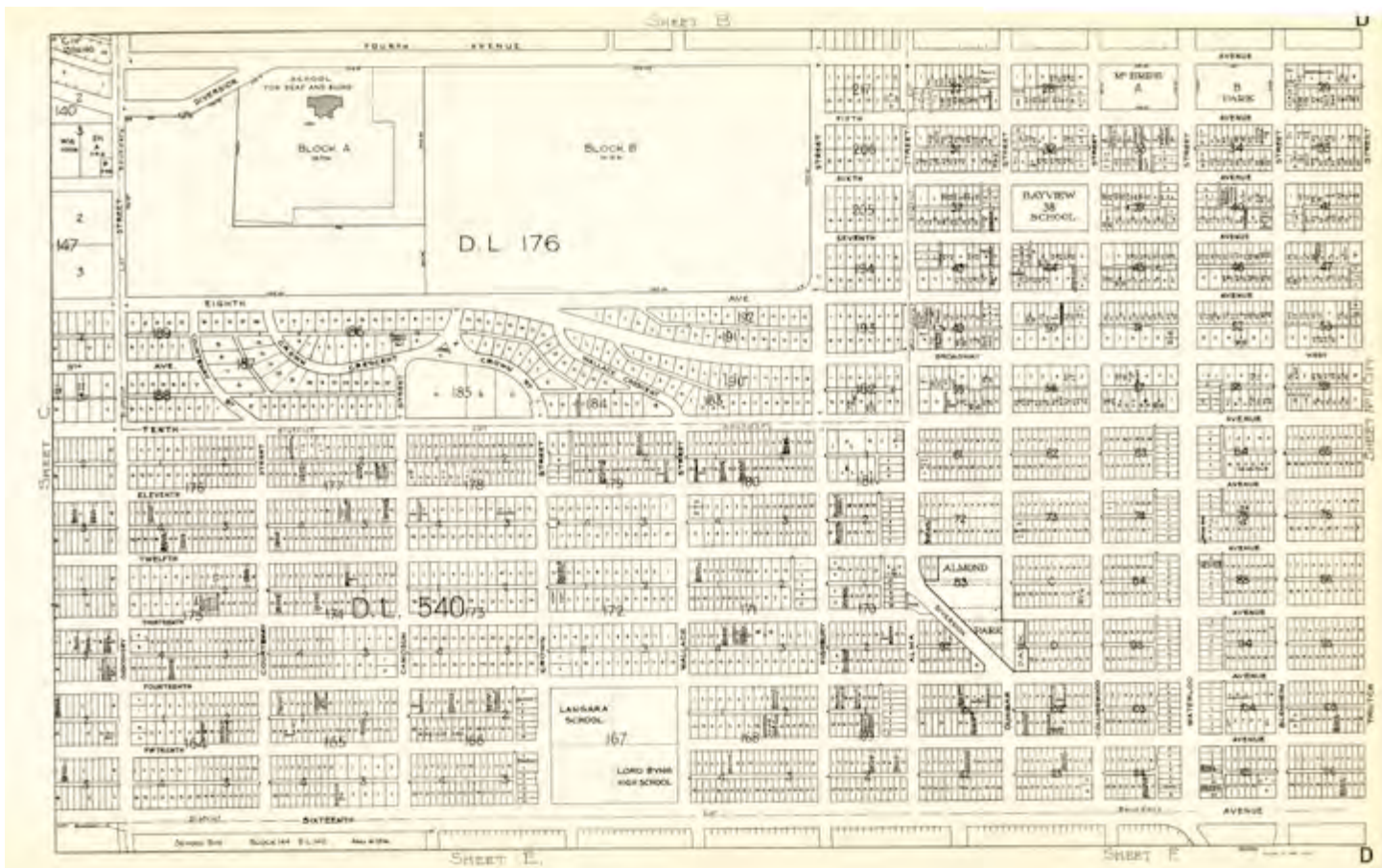
This home is perfectly positioned on West 10th Avenue at Crown Crescent for views across English Bay to the Britannia Range.



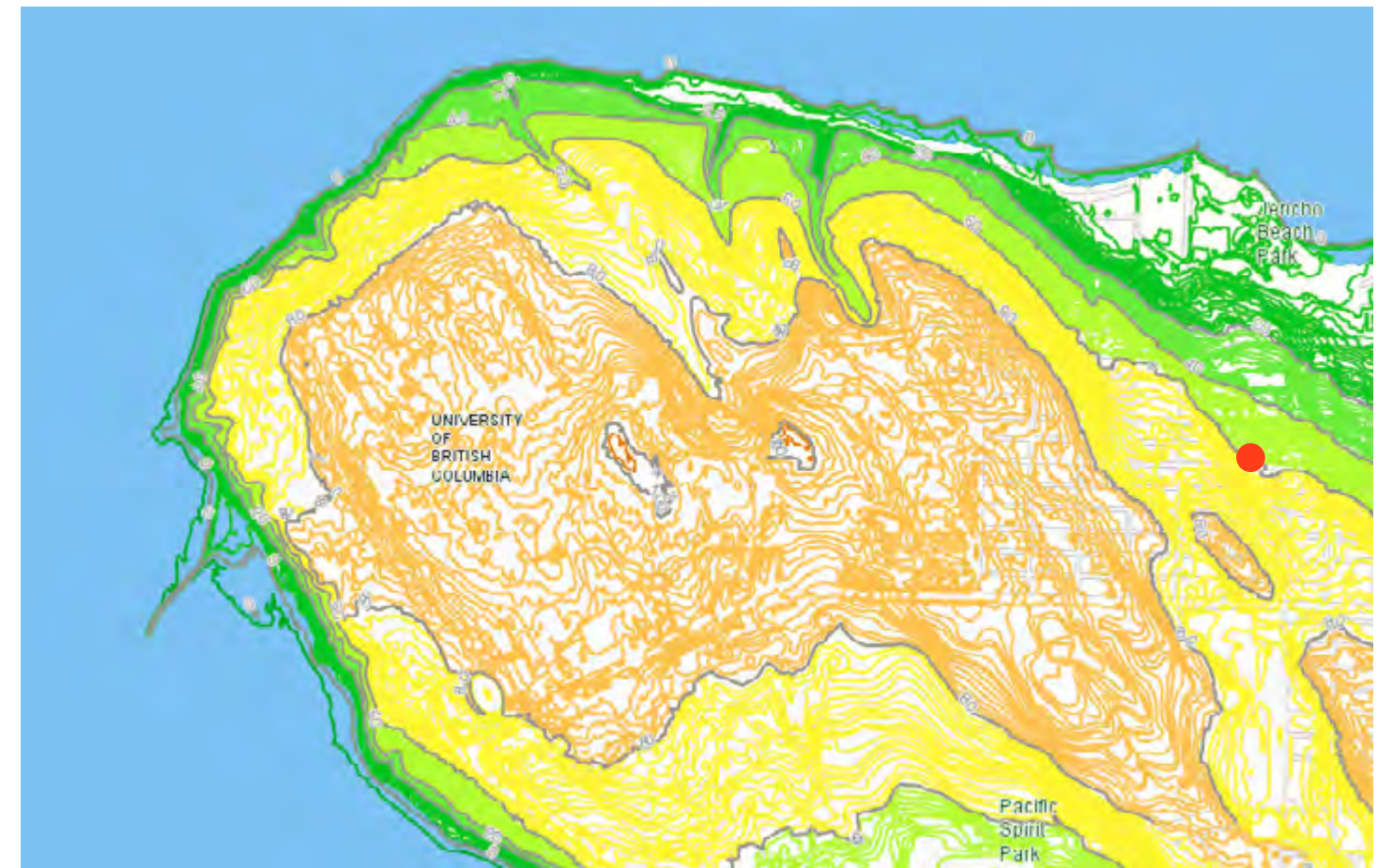
Step down from West 10th Avenue into a mature garden. From here, freighters anchored in English Bay are visible. Once inside, north-facing rooms of this classic home provide marvelous views.



The North Shore mountains, English Bay and Stanley Park on a sunny day. A wonderful view is afforded the property by its elevation.



Map of residential blocks in Point Grey, 1954.



Topographic map shows configuration of Point Grey's ridge and location of 3993 West 10th at approximately 170 feet.



The south-facing front-garden hedge and landscape provide a verdant entrance.



A wood-burning fireplace can brighten the ambience of an overcast day (as seen through this north-facing window).



A cove ceiling graces the livingroom.



Through the wide doorway is the separate dining room.



The elegant dining room is readily served by the door that connects it to the kitchen.



The view from the main-floor deck on a sunny day.



Entertain on the covered deck, and come inside to the dining room when the weather turns cold.



The translucent roof keeps this outside area feeling bright and airy all year. To the left are steps down to the garden.



Full-size stove and double sink nicely complement earlier cupboard installation.



Here, the kitchen island provides a working countertop, with additional storage below.



Window solarium allows the dedicated gardener a headstart on seedlings.



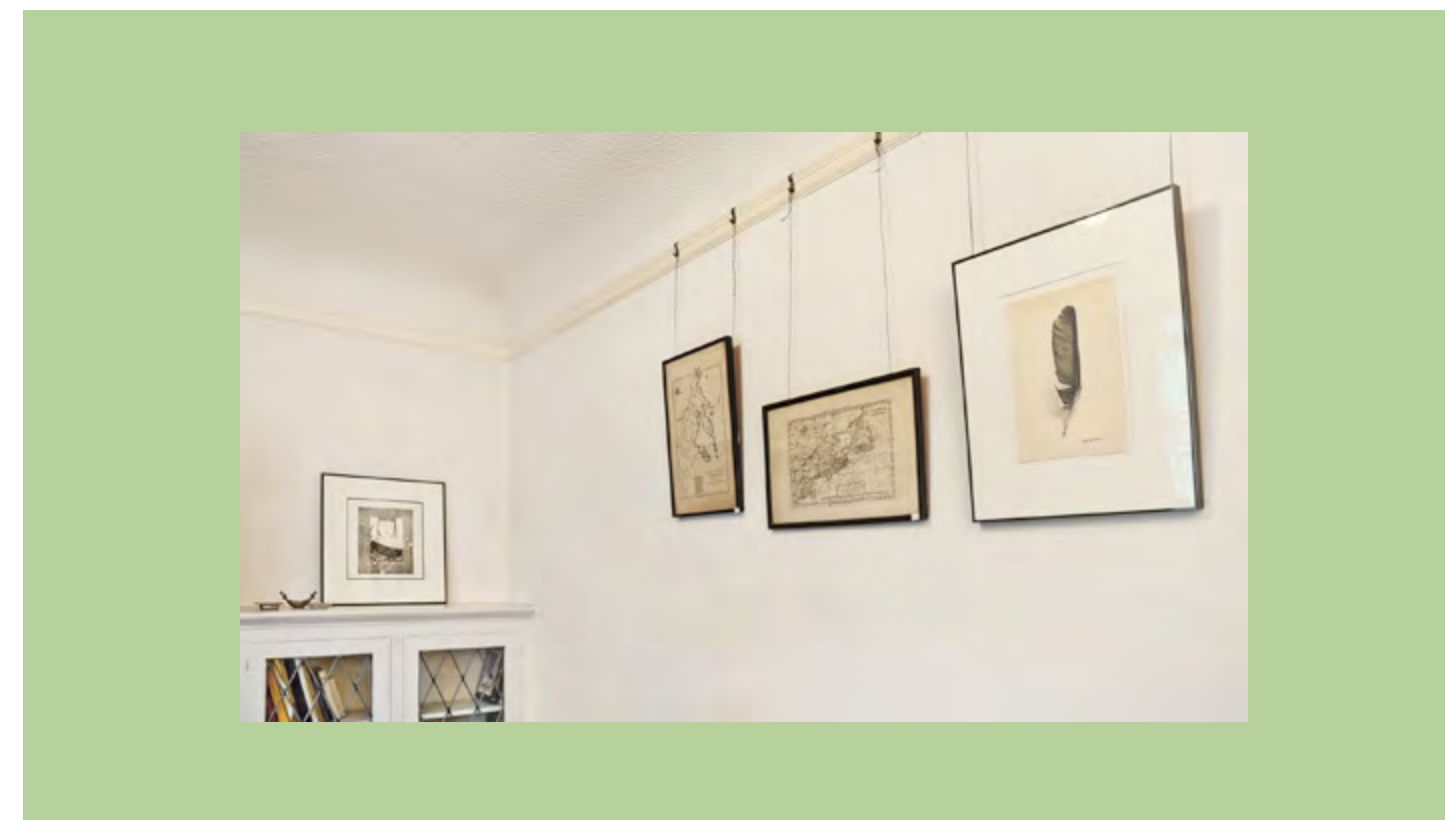
Property is 55' x 120'. At 6,600 sq.ft. there is ample room for an attractive collection of plants. Driveway leads up to an inside garage which can also serve as a workshop or studio.



Photo of the homeowners' first vegetable garden.



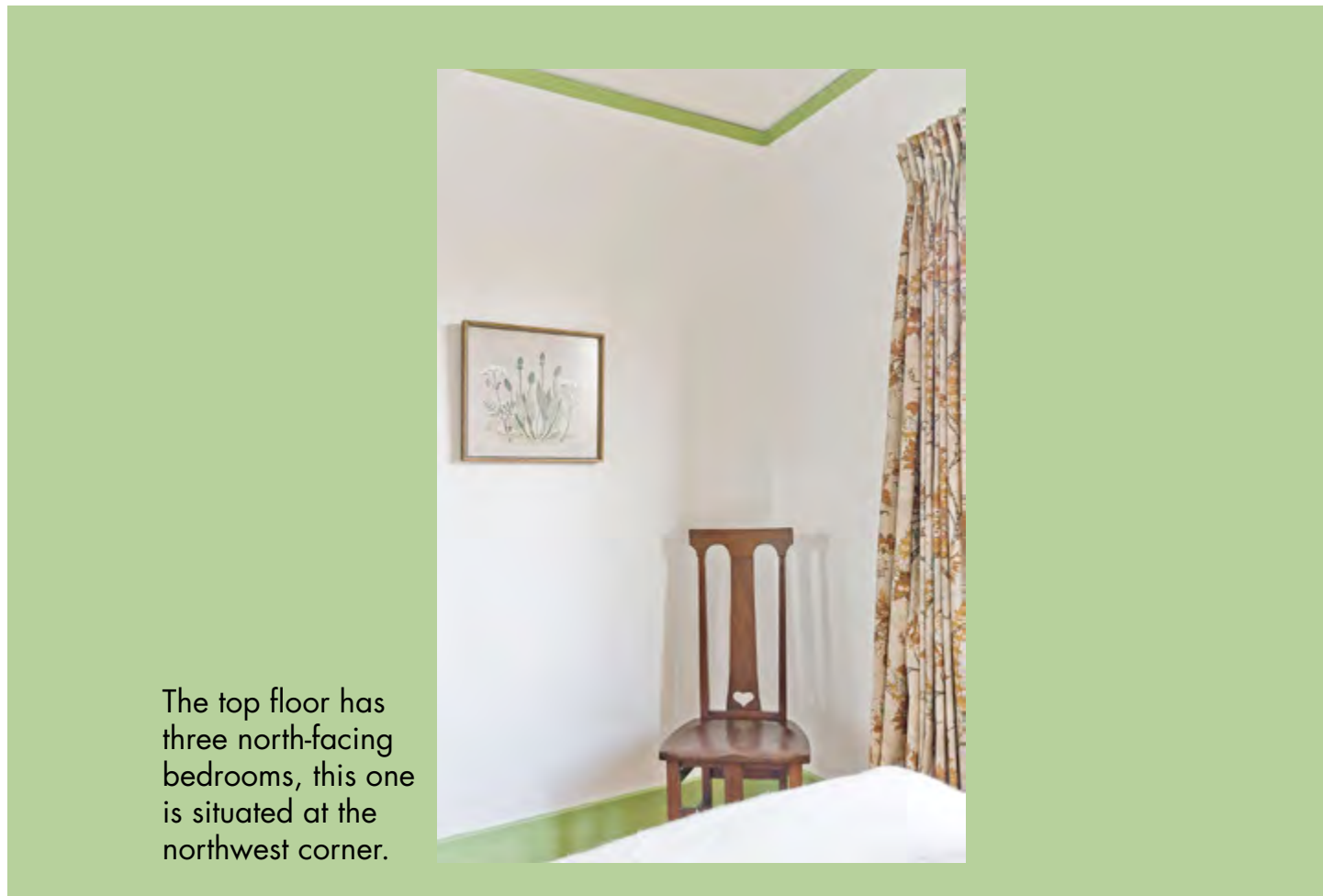
Main-floor den or bedroom with closet (not shown) overlooks front garden and has built-in glass-fronted cabinets.



Picture rails are installed throughout the house.

A cedar-clad powder room is between the room seen at left and kitchen. Step out to a hallway, off of which are stairs to three bedrooms upstairs; and a door leading downstairs to the high-ceilinged basement with two bedrooms, laundry, recreation room and interior garage.





The top floor has three north-facing bedrooms, this one is situated at the northwest corner.



On a clear day, Black Mountain is seen to the west, and to the east is downtown Vancouver.



The panoramic view, seen here from a top-floor bedroom, includes Black Mountain, Mount Strachan, Hollyburn Mountain, Grouse Mountain and Mount Seymour of the Britannia Range, a subgroup of the North Shore Mountains within the Coast Mountains. Farther to the east is Burnaby Mountain.



Another detail of the northwest bedroom documents children growing taller.



The upstairs bathroom has original tile and a modern sink.





A break in the mist reveals a freighter anchored in English Bay.



Soft light comes into play in the centre bedroom.



Leaded windows stream light.



The master bedroom is in the northeast corner. Under its eaves are two closets which might provide the space for the installation of an ensuite bathroom.



Top-floor landing has opportunity for different activities.

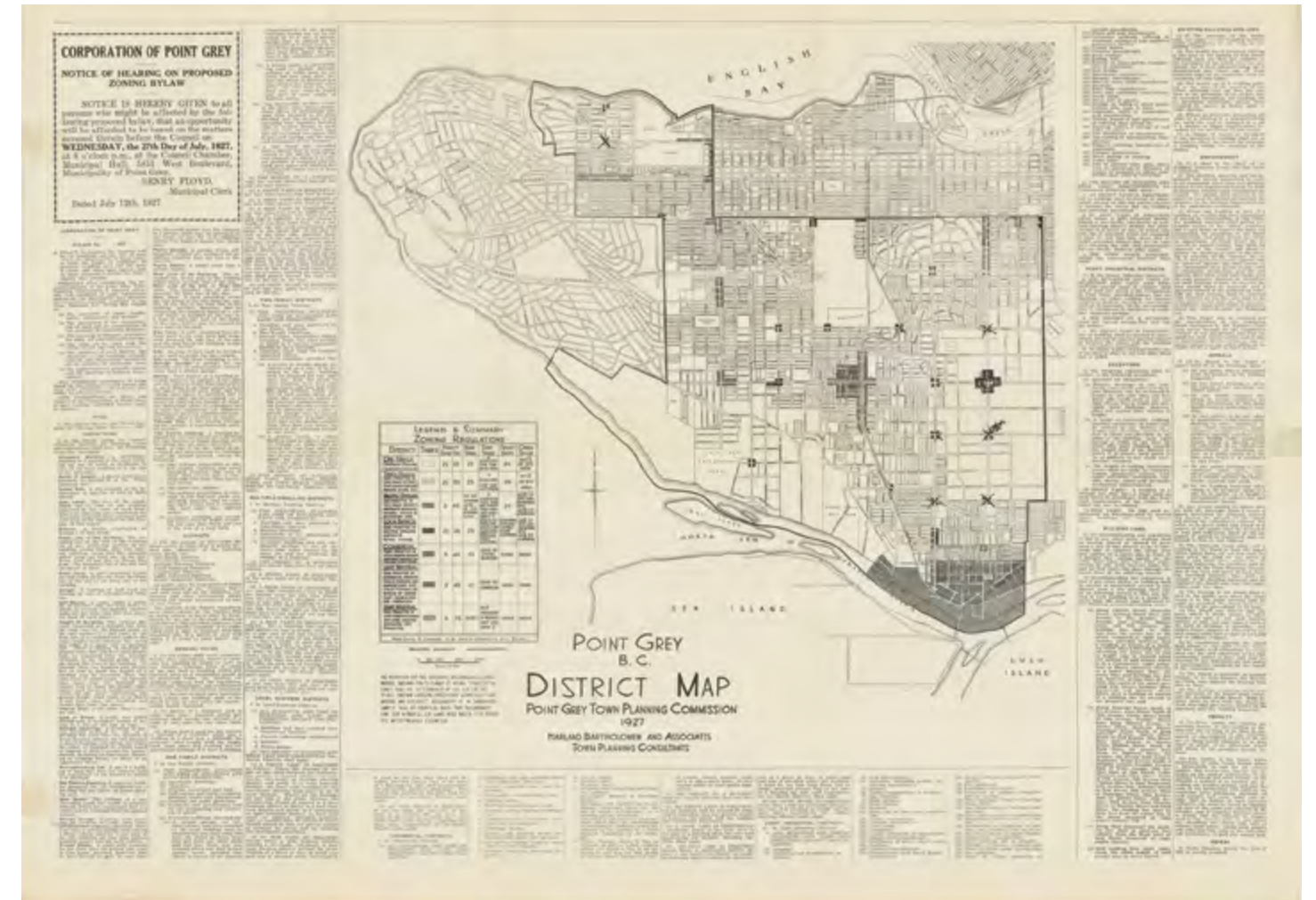


The rare-to-Vancouver *Davidia involucrata* tree (also known as handkerchief tree and dove tree), shown here with fall colours, has a place of honour in the front garden.

The peninsula upon which this house stands was named after Captain George Vancouver's friend Captain George Grey in 1792.



Above: Tenth Avenue looking east in 1927. **Below:** Lord Byng Secondary School in 1925.



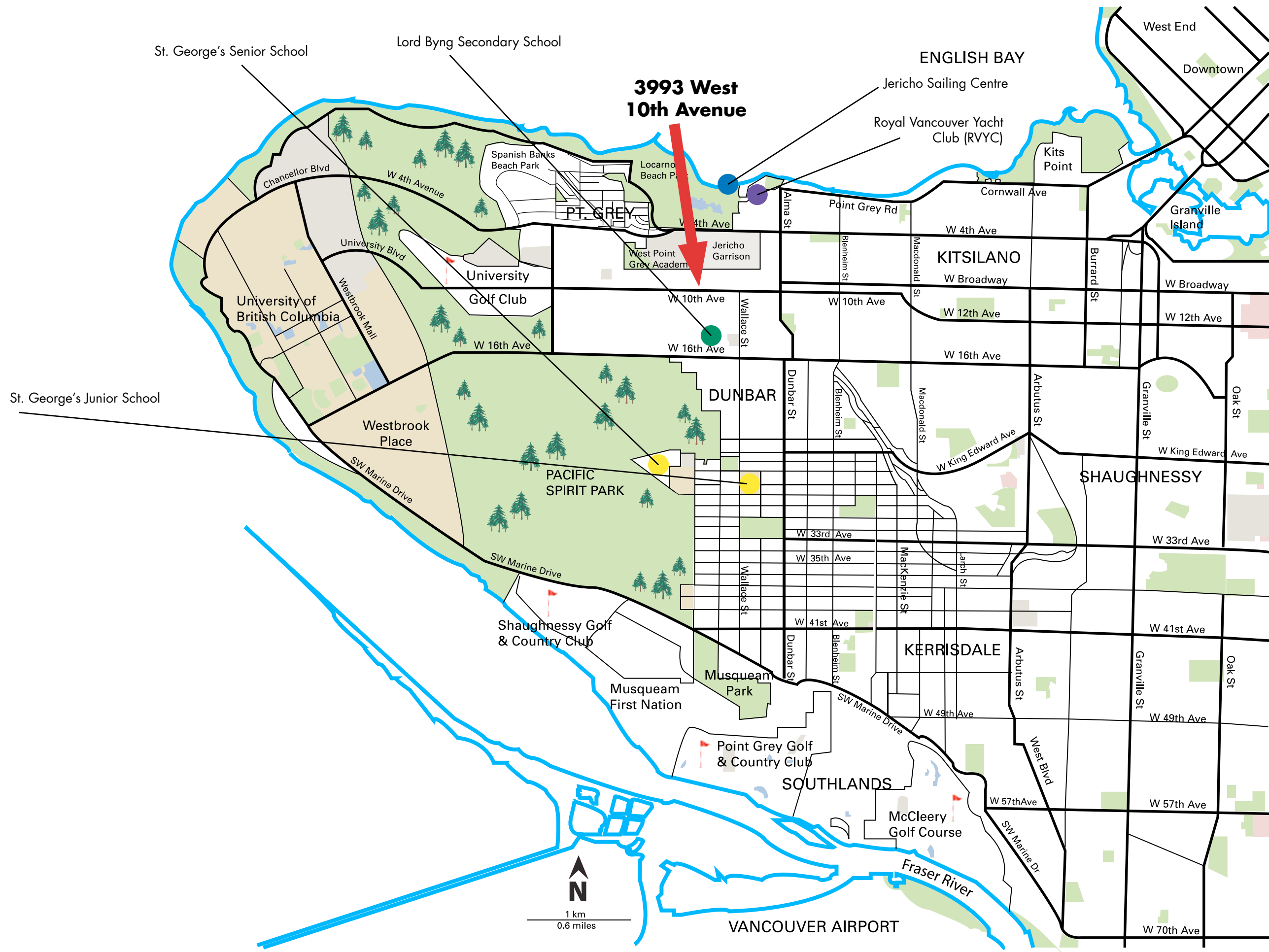
Point Grey was a separate municipality from 1908 to 1929, until it joined Vancouver on May 8, 1928. Canada's first zoning bylaw was passed by the Municipality of Point Grey in 1922.



Queen Mary Elementary School circa 1930.



Satellite view depicts Point Grey's unique mix of urban residential streets, parks, West 10th shopping district, swimming beaches, sailing centres, green space, UBC Golf Course and world-class UBC campus.





A family photo celebrates the glorious magnolia tree in early spring.